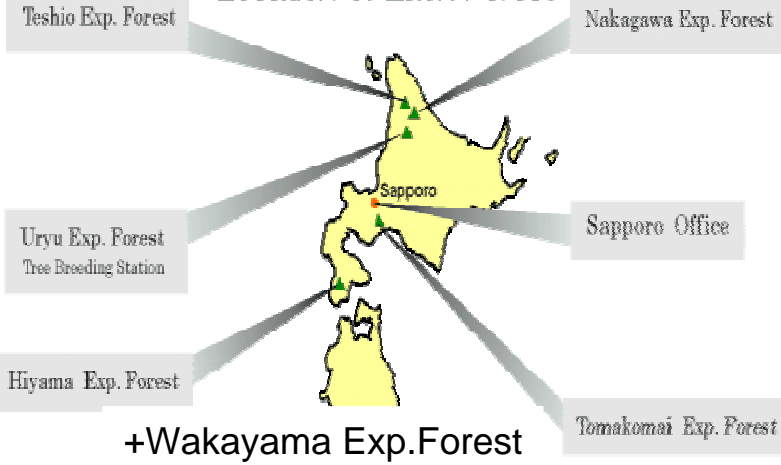


Field study on Forest Physiological Ecology

Location of Each Forest



7 Exp. Forests of
Hokkaido University

Nakagawa Exp. Forest



Aged tree



Immature pod



Black locust

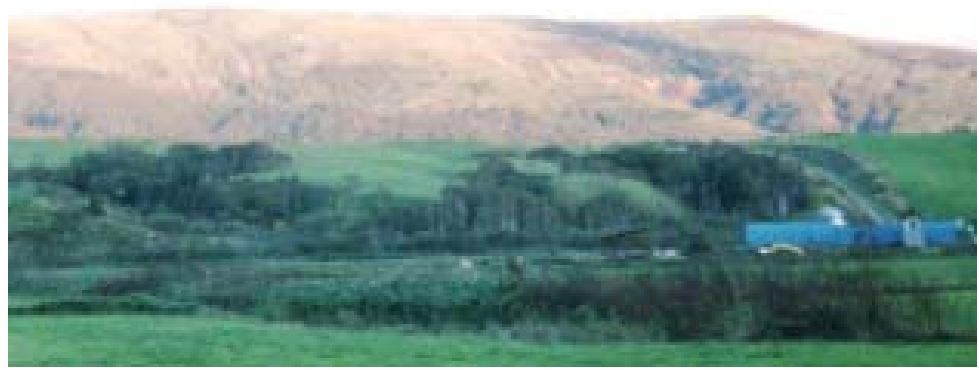
Photosynthesis research In natural
regeneration of Fir and spruce in
Uryu Exp. Forest.

Light sensor





Degraded area with shallow snow depth



Forest rehabilitation after forest fires



Nursery
In forest
on serpentine
soil

← Larch seedling



Litter production



Flux monitoring tower



FACE (Free Air CO2 Enrichment) No. 1 and 2 in Sapporo



Estimation of Net Ecosystem Productivity with hybrid larch



Experiment on induced defense
In beech and oak



Observation of physiological ecology of regeneration of beech forest



Carefully checking on trace of Insect grazing In Oak and Beech plantation



Regenerated beech seedlings by small mammals



Analysis of Plant-Insect Interaction



Current year seedling