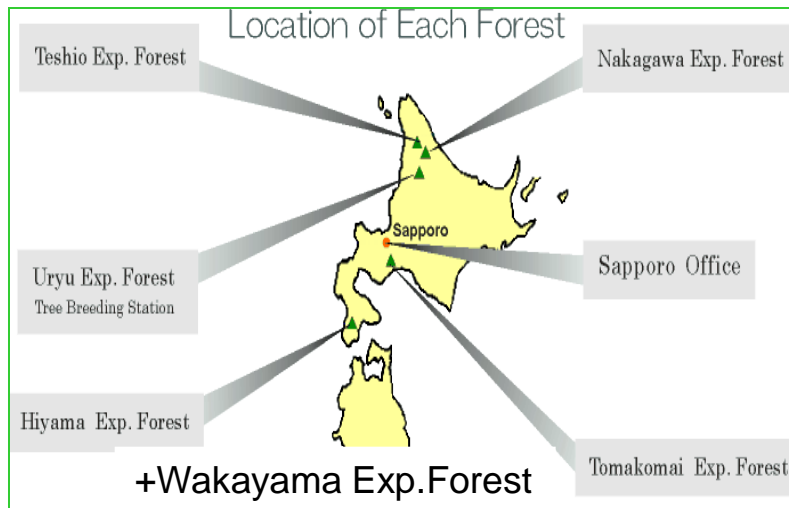


Field study on Forest Physiological Ecology



7 Exp. Forests of Hokkaido University



Light sensor



Nakagawa Exp. Forest

Aged tree

Black locust



Immature pod



Photosynthesis research In natural
regeneration of Fir and spruce in
Uryu Exp. Forest.



Field
survey

Forest declining at somma of
Lake Mashu partly due to
increasing ground surface O_3



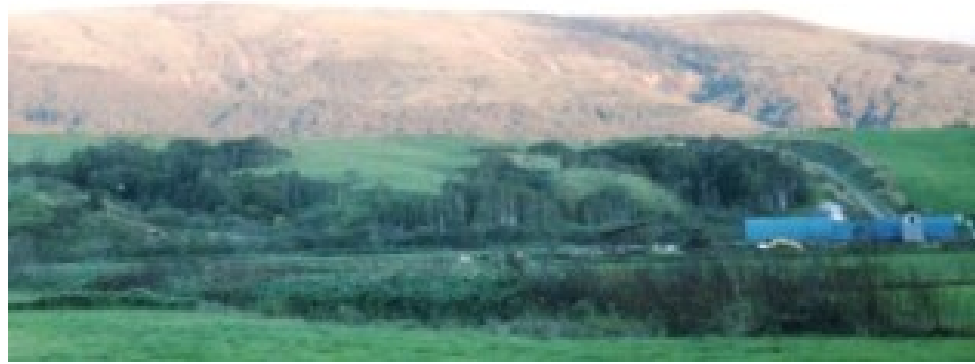
Open top chambers of 16



Free Air O_3 fumigation



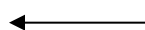
Degraded area with shallow snow depth



Forest rehabilitation after forest fires



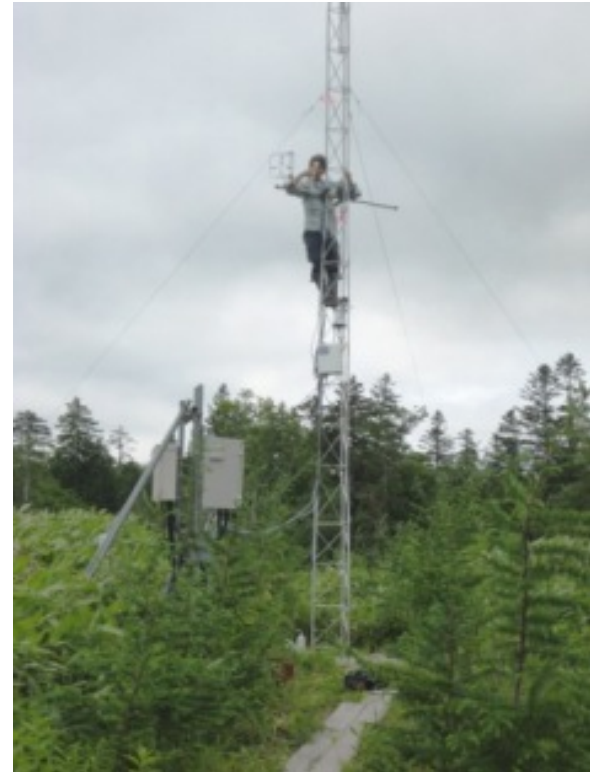
Nursery
In forest
on serpentine
soil



Larch seedling



Litter production



Flux monitoring tower

Teshio Experimental Forest



FACE (Free Air CO₂ Enrichment) No. 1 and 2 in Sapporo



Estimation of Net Ecosystem Productivity with hybrid larch



Experiment on induced defense
In beech and oak



Observation of physiological ecology of regeneration of beech forest



Carefully checking on trace of Insect grazing In Oak and Beech plantation



Analysis of Plant-Insect Interaction



Regenerated beech seedlings by small mammals



Current year seedling

Beech Forests in Hiyama
Experimental Forest